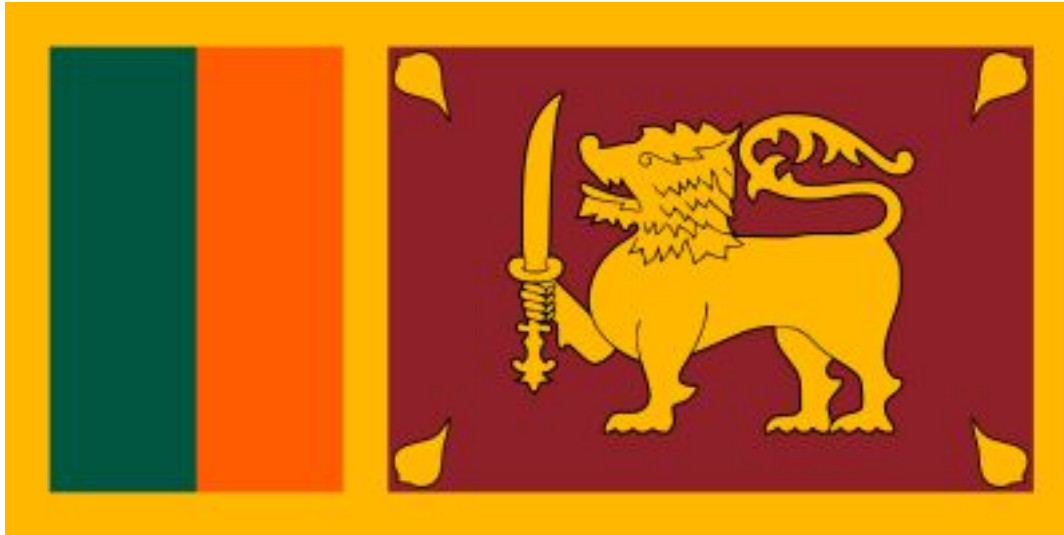


RCC member countries

Sri Lanka



Country Information

Region: South Asia

Population: Approximately 21 million

Capital: Colombo

GDP (US\$): \$87.175 billion

Geography: Sri Lanka is one of the most geographically diverse places in the world and is divided into three zones based on elevation (the central highlands, the plains, and the coastal belt).

General climate: The climate is tropical and consists of very distinctive dry and wet seasons. The weather is warm, but is moderated by ocean winds and moisture.

INFORM Risk Rating: 3.6

Risk Summary

- Sri Lanka is threatened by many natural hazards, including floods, landslides, cyclones, droughts, windstorms, coastal erosion, tsunamis, sea surges and sea level rise.
- Floods are the most frequently occurring hazard. Heavy rainfall, deforestation, improper land use, the lack of scientific soil conservation practices, rapid urbanization and insufficient drainage systems, are all contributing factors for

floods. Population growth and the need for land have also forced people to live in high-risk areas, increasing the risk of loss of life and property damage.

- Cultivation of tobacco on steep slopes, land clearing in the hills, blocking of drainage paths and large reservoir construction have contributed to the frequency of landslides in the hill slopes, especially in the Kegalle District.
- In terms of people affected and relief provided, drought is the most significant hazard in Sri Lanka. In some areas, consecutive periods of drought have had lasting impacts on livelihoods. 20 out of 25 districts have been affected by drought since 2016, affecting about 1.8 million people and reducing 2017's rice harvest by more than 50%.

Disaster Management System

National Level

- **National Council for Disaster Management (NCDM)**

The NCDM is the supreme body for disaster management in Sri Lanka, however it does not currently hold a functional role.

- **Ministry of Disaster Management**

The Ministry of Disaster Management is responsible for implementing disaster prevention and mitigation projects; planning and implementing disaster preparedness activities; issuing and disseminating early warning messages; developing regional cooperation schemes; capacity-development of key stakeholders involved in early relief activities; conducting disaster management awareness and training programs; and facilitating coordination between key partners involved in disaster management.

It is also assigned to formulate policies, programs, and projects on disaster management; conduct M&E; coordinate and manage mitigation, response, recovery and relief activities; facilitate the development of the National Disaster Management Plan and the National Emergency Operation Plan; initiate and coordinate foreign aid; liaise with relevant government agencies; encourage research and development on technology; and coordinate international humanitarian relief service programs.

- **Department of Meteorology**

The Department of Meteorology provides early warning services for meteorological hazards and tsunamis.

- **Disaster Management Centre**

The Disaster Management Centre is the executing arm of the NCDM. It coordinates and collaborates with relevant government agencies to manage DRR. Its main objectives are to develop and implement the National Disaster Management Plan and the National Emergency Operation Plan; provide hazard and risk information; formulate and implement mitigation strategies; disseminate early warnings; manage emergency operations and post-disaster activities; build capacity on disaster response; and awareness-raising among the population.

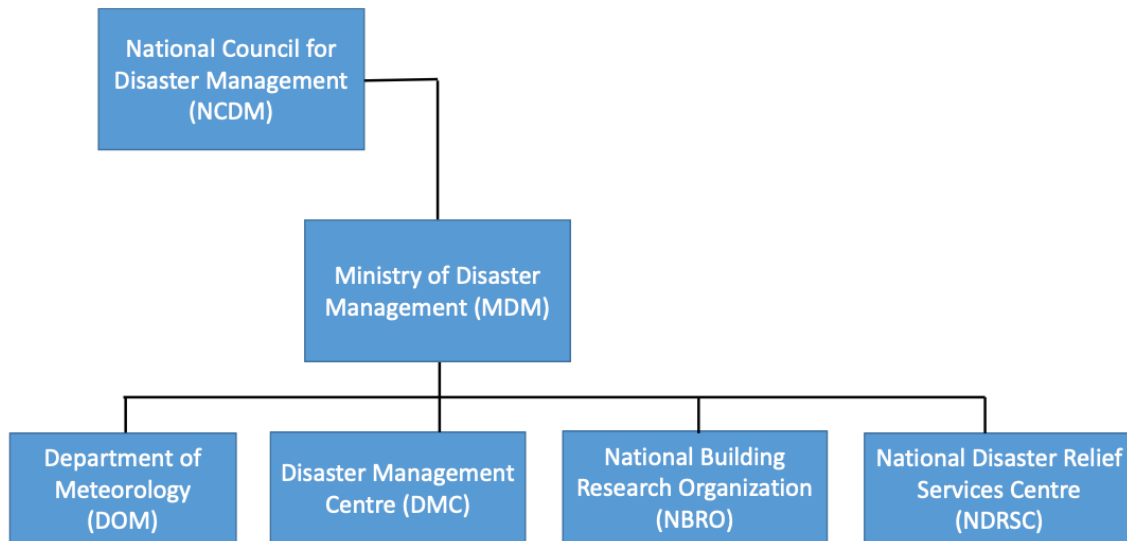
- **National Building Research Organization**

Its role is to promote disaster mitigation, preparedness and safety through disaster education, research and training.

- **National Disaster Relief Centre:**

The National Disaster Relief Centre handles preparation, response and recovery measures assigned to it.

Figure 1. Organization Structure for Disaster Management in Sri Lanka



Source: CFE-DM. 2017. *Sri Lanka Disaster Management Reference Handbook*.

Helpful Links and Sources

Sri Lanka country profile:

<https://data.worldbank.org/country/sri-lanka>

INFORM country risk profile:

<http://www.inform-index.org/countries/country-profiles>

Ministry of Disaster Management website:

<http://www.disastermin.gov.lk>

Sri Lanka Disaster Management Reference Handbook:

<https://reliefweb.int/sites/reliefweb.int/files/resources/CFE-DM%20Reference%20Handbook-Sri%20Lanka%202017.pdf>