

# RCC member countries

## Lao PDR



### Country Information

**Region:** Southeast Asia

**Population:** Approximately 6.8 million

**Capital:** Vientiane

**GDP (US\$):** \$16.853 billion

**Geography:** Lao PDR is a landlocked country surrounded by Myanmar, Cambodia, China, Thailand and Vietnam. It is divided into three regions, the northern, central and southern regions. About two thirds of the country is mountainous and thickly forested, characterized by steep terrain, narrow river valleys and low agricultural potential. The alluvial plains and terraces of the Mekong and its tributaries cover only about 20% of the land area.

**General climate:** Lao PDR has a tropical monsoon climate.

**INFORM Risk Rating:** 4.2

## Risk Summary

- The main hazards in Lao PDR are river- and flash-floods, landslides, forest- and community-fires, drought, acute water shortages during specific months of the year, occasional wind storms and typhoons, agricultural pests, rodent infestations and animal- and human- epidemics.
- Severe typhoons have been reported causing colossal losses in human lives, property and agriculture. However, data and reports on storm events in Lao PDR are limited.
- Flood events are common in Lao PDR following the southwest monsoon season. The major flood event in 2016 in the northern provinces affected over 19,000 people and was responsible for at least five deaths.
- The country is vulnerable to prolonged droughts. In 2003, extreme drought conditions in the northern and central regions resulted in about US\$16.5 million in damages.
- Landslides occur as a result of increases in groundwater due to prolonged rainy seasons and river bank erosion. They have resulted in heavy economic losses and severe infrastructural damage.
- Of all the disasters in Lao PDR, epidemics are the most frequent. Dengue, Acute Water and Bloody Diarrhea, Typhoid and Acute Respiratory Tract Infections are the most commonly reported diseases.
- Unexploded Ordnances (UXOs) have a lethal history in Lao PDR and continue to kill large numbers of people and livestock, impede infrastructure development and deny access to agricultural and pastoral lands.

## Disaster Management System

### National Level

- **National Disaster Management Committee (NDMC)**

The NDMC provides recommendations and advice to the Prime Minister and plays the lead role in ensuring effective coordination related to all interventions in the disaster cycle, including mitigation, prevention, preparedness, response and recovery, while applying a multi-hazard approach.

### Sub-National Level

- **Provincial Disaster Prevention and Control Committee (PDPCC)**

The PDPCC is mandated to take charge of disaster risk management within the province and districts, and coordinate national and international support.

- **District Disaster Prevention and Control Committee (DDPCC)**

The DDPCC works closely with provinces and villages through the structure of PDPCC and takes the lead in implementation of CBDRR activities and projects. It also cooperates with NGOs and supports CBDRR projects at the village level.

- **Village Disaster Prevention Units (VDPU)/ Village Disaster Prevention and Control Committee (VDPCC)**

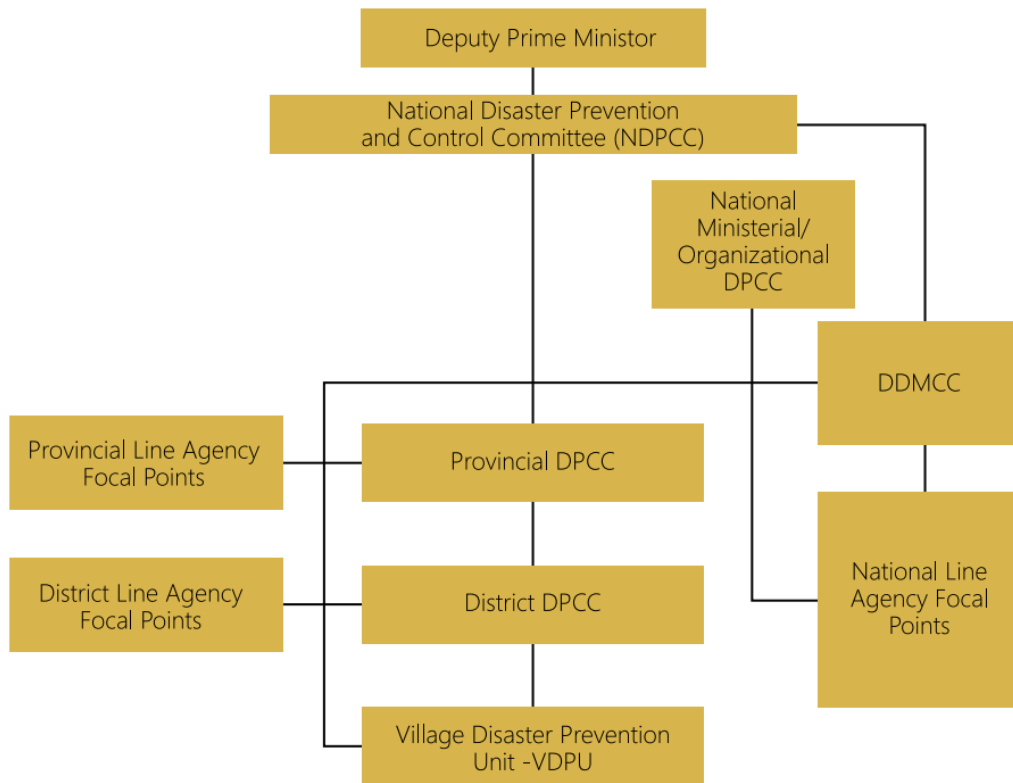
The VDPU and VDPCC are responsible for implementing CBDRR activities at the village-level, including training communities on what to do before, during and after disaster events.

- **Department of Climate Change (DCC)**

The DCC is the national secretariat of the NDPCC and takes the key role in overall data gathering and assessment in cooperation with relevant data collectors. It reports directly to the NDPCC to support decision-making.

*Note: the DCC was formerly called the Department of Disaster Management and Climate Change (DDMCC).*

Figure 1. Lao Disaster Risk Management Institutional Arrangement



Source: CFE-DM. 2018. *Lao PDR Disaster Management Reference Handbook*.

## Helpful Links and Sources

Lao PDR country profile:

<https://data.worldbank.org/country/lao-pdr>

INFORM country risk profile:

<http://www.inform-index.org/countries/country-profiles>

National Risk Profile of Lao PDR, Hazard Assessment:

[https://www.adpc.net/igo/category/ID275/doc/2013-sWNa61-ADPC-Final\\_Report\\_Part1.pdf](https://www.adpc.net/igo/category/ID275/doc/2013-sWNa61-ADPC-Final_Report_Part1.pdf)

Lao PDR Disaster Management Reference Handbook:

<https://reliefweb.int/sites/reliefweb.int/files/resources/CFE%20DM%20Reference%20Handbook-Lao%20PDR%202017.pdf>